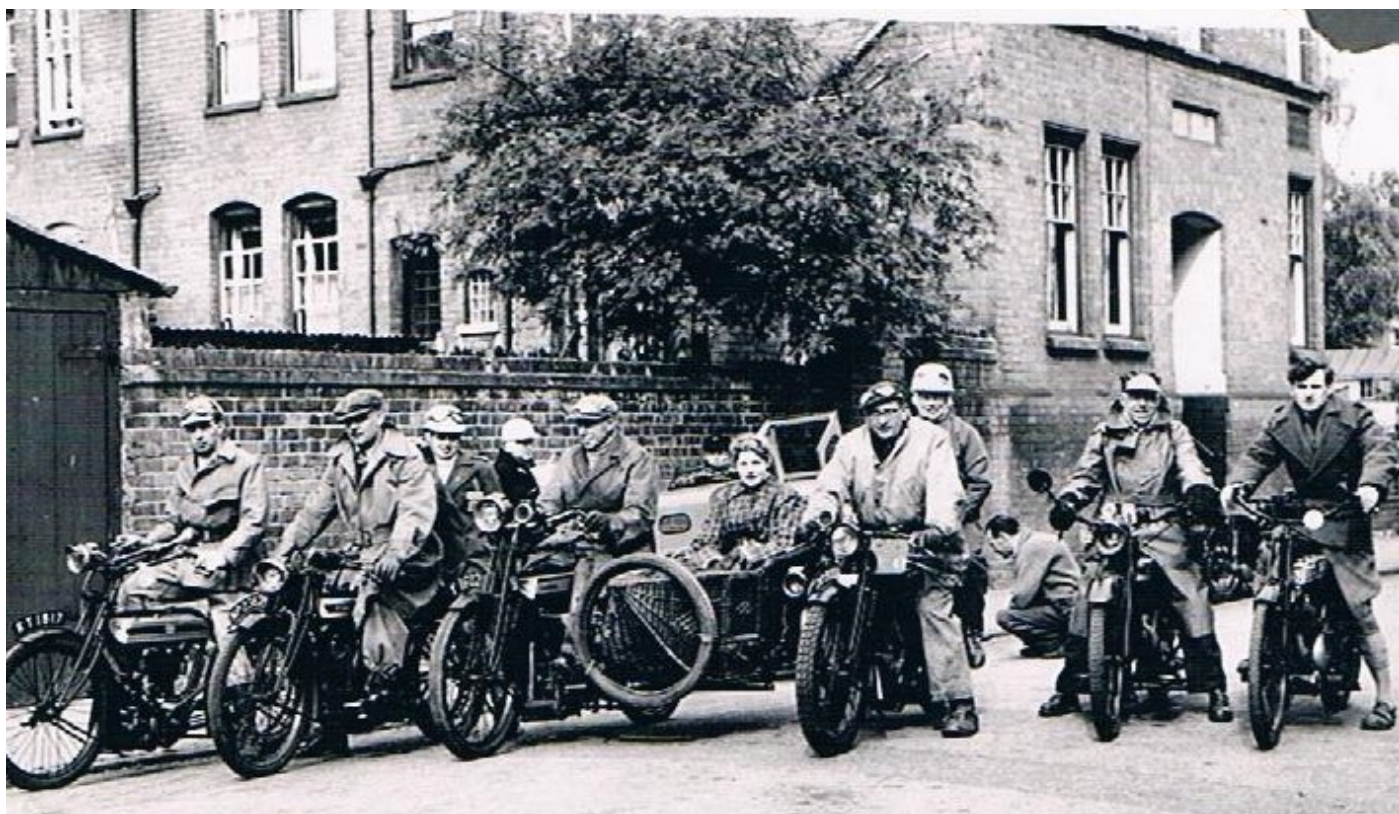


THE VINTAGE MOTOR CYCLE CLUB



**COTSWOLD
SECTION**



**Supplementary Regulations for the
29th COTSWOLD WEEKEND**

incorporating

29th Cotswold Weekend Road Trial

Saturday 1st July 2017

Cotswold Weekend Social Run

Sunday 2nd July 2017

THE VINTAGE MOTOR CYCLE CLUB
Supplementary Regulations for the 29th Cotswold Weekend
1st and 2nd July 2017

1: INVITATION

- 1.1: The Cotswold Section of the Vintage Motor Cycle Club is pleased to invite members of the Vintage Motorcycle Club driving VMCC eligible (pre-1993 solo and sidecar motorcycles and three-wheelers) to participate in its 29th Cotswold Weekend on 1st and 2nd July 2017.
- 1.2: This invitation is extended to non-members of the VMCC driving VMCC eligible machines provided they take out one-event membership of the VMCC, see Entry Form for details. The Cotswold Weekend is one of the Cotswold Section's "recruitment events" for 2017 so there is no charge for one-event membership.
- 1.3: The events take place over two days and comprise social and motorcycling activities. Participants may choose to participate in as few or as many of these activities as they wish.
- 1.4: The riding events are open to persons specified in Clauses 1.1 and 1.2 of these Regulations driving VMCC-eligible (pre-1993) solo and sidecar motorcycles and three-wheelers.

2: OFFICIALS OF THE MEETING

- 2.1: Steward..... Tony Wright KOB I
- 2.2: Secretary of the Meeting..... Jenny Hart, 56 Wigeon Lane, Walton Cardiff,
Tewkesbury, Gloucestershire, GL20 7RS
telephone: 01684 276610
email: jenny@hart1246.plus.com

3: FORMAT OF THE EVENT

- 3.1: 29th Cotswold Weekend Road Trial..... Saturday, 1st July, 1000 hours
- 3.2: Cotswold Weekend Social Run..... Sunday, 2nd July, 1000 hours

4: VENUE

The event will be based at Apple Orchard Campsite, Adsett, Westbury on Severn, Gloucestershire, GL14 1PH (Grid Reference: SO 728 149) where camping for Tents, Caravans and Motorcaravans will be available. Please book pitches direct with the site on 01452 760618 or info@appleorchardcampsite.co.uk.

5: ENTRIES

- 5.1: Entries will be received forthwith on the official entry form accompanied by the correct entry fee and must reach the Secretary of the Meeting no later than 14th June 2017.
- 5.2: In the event of the Entrant or any Passenger in the road events being under 18 years of age on the date of the event, agreement to participation in the event shall be given by the parent or guardian of the Entrant and/or Passenger concerned. The parent or guardian shall complete a Parental Agreement Form, which may be obtained from the Secretary of the Meeting, and return the completed form to the Secretary of the Meeting. Failure to do so will result in rejection of the entry.
- 5.3: Cheques and Postal Orders should be crossed and made payable to VMCC (Cotswold Section).
- 5.4: Entry fees will be returned only in the event of over-subscription, abandonment or postponement.

6: LEGAL REQUIREMENTS

- 6.1: Entrants and machines in the road events must comply with all legal requirements.
- 6.2: Entrants may be required to produce proof that they comply with the legal requirements at any time during the event.

7: ACCOMMODATION LIST

Name	Telephone Number	Approx. mileage to Apple Orchard Campsite
The Belfry Hotel, Littledean, GL14 3JS	01594 827858	4.8
Birdwood Villa Farm B&B, Birdwood, GL19 3EQ	01452 750451	3.2
Blaisdon House B&B, Blaisdon, GL17 0AH	01452 830437	3.2
Brayne Court B&B, Littledean, GL14 3JY	01594 822163	4.9
The Farmers Boy Inn, Longhope, GL17 0LP	01452 470105	6.7
The Fern Ticket, Cinderford, GL14 2SQ	01594 826908	6.0
Littledean House Hotel, Littledean, GL14 3JT	01594 822106	4.8
New House Farm B&B, Longhope, GL17 0LS	01452 830484	7.8
The New Inn, Ruspidge, GL14 3AR	01594 824508	6.8
Old House B&B, Newnham on Severn, GL14 1BW	01594 510944	3.7
The Old Vicarage B&B, Awre, GL14 1EL	01594 510282	7.1
The Red Lion Inn, Westbury on Severn, GL14 1PA	01452 760221	1.3
The Ship Inn, Newnham on Severn, GL14 1BY	01594 516283	4.0
Speech House Hotel, Coleford, GL16 7EL	01594 822607	8.4
The Yew Tree Inn Motel, Longhope, GL17 0QD	01452 830355	6.6

8: 29th COTSWOLD WEEKEND ROAD TRIAL - Saturday 1st July 2017

8.1: Announcement

- 8.1.1: The Cotswold Section of the Vintage Motor Cycle Club will hold, on Saturday 1st July 2017, a Road Trial open to persons specified in Clauses 1.1 and 1.2 of these Regulations.
- 8.1.2: The event will be known as the 29th Cotswold Weekend Road Trial and will be run under a VMCC Permit.
- 8.1.3: The event will be held under the National Sporting Code and Appendices of the Auto-Cycle Union together with these Supplementary Regulations. Subject to the NSC the right is reserved to vary these regulations or to postpone or abandon the event or to issue further instructions for the conduct of the event which will have the force of these Regulations.
- 8.1.4: The Road Trial is a competitive road trial in which entrants aim to ride between checkpoints at random intervals on a course set out on a route card. The competitors will be asked to guess the distance between the checkpoints and their average speed between the checkpoints. This will be compared with the actual recorded information and points will be lost for the difference between the competitors guessed information and the recorded actual information. The competitor who loses least points in their class wins the class

8.2: Officials

- 8.2.1: Clerk of the Course: Fred Smith Junior KOB I
- 8.2.2: Concours d'Elegance Judge: Tony Wright KOB I

8.3: Entry Fees

8.3.1: These Entry Fees cover participation in the Road Trial and a Lunch at the Lunch Stop.

8.3.1.1: The Entry Fee for Entrants is £12.00.

8.3.1.2: The Entry Fee for Passengers is £7.50.

8.3.2: The cost of additional Lunches is £7.50 each.

8.4: Description

8.4.1: The Start and Finish of the Road Trial will be at Apple Orchard Campsite, Adsett.

8.4.2: The Route will consist of about 80 miles of metalled roads and lanes and will include some ascents and descents.

8.4.3: There is one route for all competitors as there are no steep ascents or descents.

8.4.4: The first Driver will leave the Start at 1001 hours and the remainder will leave at one-minute intervals.

8.5: Route Finding

8.5.1: Detailed Route Cards will be issued.

8.5.2: The onus of finding the correct route will rest with the Driver.

8.6: Lunch Stop

8.6.1: The Route will include a Lunch stop for 90 minutes

8.7: Control Points

8.7.1: The Start, Lunch stop and Finish will constitute Control Points.

8.7.2: There will be other Control Points, which will not be marked, on the Route.

8.7.3: Each Driver will be asked to guess the distance travelled and their average speed between each Control Point visited. It will be the responsibility of each rider to ensure that the Control Card is correctly marked at each Control Point and that the Control Card is handed in at the Final Control.

8.7.4: Loss of or damage to the Control Card may result in exclusion from the results.

8.7.5: Control Points will close 30 minutes after the last competitor should have passed.

8.8: Observed Sections

8.8.1: Certain parts of the route may be marked as Observed Sections and these must be travelled non-stop.

8.8.2: A Machine is deemed to have entered the Observed Section when the front wheel spindle passes the "Section Begins" card.

8.8.3: A Machine is deemed to have left the Observed Section when the front wheel spindle passes the "Section Ends" card.

8.9: Penalties

8.9.1: 5 marks will be deducted for pedal assistance, or Driver or Passenger footing or running alongside in order to maintain forward motion in an Observed Section.

8.9.2: 10 marks will be deducted for stopping or receiving outside assistance to maintain forward motion in an Observed Section.

8.9.3: 50 marks will be deducted for wrong direction of approach at an Observed Section, Rest Halt or Control Point.

8.9.4: 50 marks will be deducted for any Driver missing an Observed Section, Rest Halt or Control Point.

8.9.5: Failure to sign off will lead to exclusion.

8.10: Ties:

Should a tie occur the following tie deciders will be applied in this order: -

8.10.1: The Driver or Team covering the greatest distance with the least loss of marks.

8.10.2: The Driver of the older Machine (for Teams, the greatest total age of all Machines in the Team).

8.10.3: The Driver of the smaller capacity Machine (for Teams, the smallest total capacity

of all the Machines in the Team).

8.11: Machine Bonus Marks

Entrants will be credited with bonus marks as shown below. It is the responsibility of the Entrant to ensure that the correct Bonus Marks are claimed on the Entry Form.

- 8.11.1: For each year before 1926..... 1 marks
- 8.11.2: Pre-1946 solo machine under 151 cc 4 marks
- 8.11.3: Pre-1946 solo machine 151 cc to 250 cc..... 2 marks
- 8.11.4: 1946 to 1960 solo machine under 151 cc..... 2 marks
- 8.11.5: Pre-1931 sidecar or three-wheeler 5 marks
- 8.11.6: 1931 to 1945 sidecar or three-wheeler 2 marks
- 8.11.7: Sidecar or three-wheeler under 301 cc 10 marks
- 8.11.8: Pre-1961 sidecar or three-wheeler 301 cc to 500 cc 5 marks
- 8.11.9: Single gear, any drive 10 marks
- 8.11.10: Two speed, belt final drive 7 marks
- 8.11.11: Two speed, chain or shaft final drive 4 marks
- 8.11.12: Three speed, belt final drive 4 marks
- 8.11.13: Multi or Gradua type gear (all belt) 2 marks
- 8.11.14: No clutch 4 marks
- 8.11.15: Belt rim or contracting band brakes..... 1 mark per brake
- 8.11.16: Wheel rim brakes 2 marks per brake
- 8.11.17: P & M, Royal Enfield, Scott and similar type gears are deemed to incorporate a clutch.

8.12: Machines and Drivers

- 8.12.1: A numbered card will be provided by the organisers and must be clearly displayed at the front of the Machine, and must be removed immediately after the Road Trial.
- 8.12.2: The use of hand-held or helmet-mounted video cameras / webcams is not permitted. Any entrant wearing a helmet-mounted camera will not be permitted to start. Any entrant seen to be using a hand-held camera whilst driving will be excluded from the results. Video cameras / webcams are permitted only if they are fixed to the machine.

8.13: Classes

- 8.13.1: Veteran Machines manufactured before 1st January 1915.
- 8.13.2: Vintage Machines manufactured between 1st January 1915 and 31st December 1930.
- 8.13.3: Post-Vintage Machines manufactured between 1st January 1931 and 31st December 1945.
- 8.13.4: Post-War Machines manufactured between 1st January 1946 and 31st December 1960.
- 8.13.5: Post-1960 Machines manufactured between 1st January 1961 and 31st December 1975.
- 8.13.6: Post-1975 Machines manufactured between 1st January 1976 and 31st December 1992.

8.14: Teams

- 8.14.1: Teams of three Entrants may enter for the Team Award.
- 8.14.2: There is no additional entry fee for a Team.
- 8.14.3: Each Team must nominate a Captain who will be responsible for the return of the Team Award.
- 8.14.4: No Entrant may be a member of more than one Team.

8.15: Awards

8.15.1: Performance Awards

- 8.15.1.1: Best Pre-1907 machine..... The Chris Read Cup
- 8.15.1.2: Best Veteran Solo..... The Hawks Motor Club Cup
- 8.15.1.3: Best Vintage Solo..... The A Williams Cup
- 8.15.1.4: Best Post-Vintage Solo..... The Balcarras Cup
- 8.15.1.5: Best Post-War Solo..... The Burke Bros. Cup
- 8.15.1.6: Best Post-1960 Solo..... The Birmingham Cup
- 8.15.1.7: Best Post-1975 Solo..... Post-1975 Solo Trophy
- 8.15.1.8: Best Sidecar or 3-Wheeler..... The Three Wheeler Cup
- 8.15.1.9: Best Team Performance..... The Arthur Mortimer Salver
- 8.15.1.10: No Entrant may win more than one Performance Award with the exception of the Team Award.

8.15.2: Concours d'Elegance Awards will be presented to the winner in each of the six Classes specified in Regulation 8.15 above.

8.15.3: To be eligible for any Award, Entrants must comply with these Regulations and must have travelled the entire distance by the power of their machines or the exertion of themselves or their Passenger(s) or by natural causes.

8.16: Protests

- 8.16.1: Protests must be made in writing to the Secretary of the Meeting within seven days of publication of the results and must be accompanied by the Protest Fee of £50.00.
- 8.16.2: The Protest Fee will be returned only if the Protest is upheld or considered reasonable.

8.17: Concours d'Elegance judging will take place at the Start, the Lunch Stop and the Finish.

8.18: Western Region Road Trials Championship

The results of the Road Trial count towards the 2017 VMCC Western Region Road Trials Championship, subject to the agreement of the Championship Recorder.

9: COTSWOLD WEEKEND SUNDAY SOCIAL RUN - Sunday 2nd July 2017

- 9.1: Clerk of the Course: Ian Dettmer
- 9.2: A 70-mile Social Run open to persons specified in Clauses 1.1 and 1.2 of these Regulations will be organised on Sunday 2nd July 2017 and will be run under a VMCC Permit. The Social Run will start from Apple Orchard Campsite, Adsett at 1000 hours.
- 9.3: Participants will be issued with a diagrammatic Route Card for the Social Run.
- 9.4: Please indicate on your Entry Form if you wish to participate in the Social Run.

2017 COTSWOLD TOURING HOLIDAY

The Cotswold Touring Holiday will be held between Monday 26th June 2017 and Friday 30th June 2017 and will be based at Apple Orchard Campsite, Adsett, Westbury on Severn, Gloucestershire, GL14 1PH.

The Touring Holiday will consist of daily Social Runs, each starting at 1000 hours (unless otherwise announced), to places of local, or further afield, interest.

For further details please contact Jenny Hart, 56 Wigeon Lane, Tewkesbury, Gloucestershire, GL20 7RS.

telephone: 01684 276610 email: jenny@hart1246.plus.com